



CARPET TILE

- 100% BCF solution-dyed polypropylene
- 19.7" x 19.7" carpet tiles
- 18 oz/yd² pile weight
- 1/12" gauge
- 5000 density



SOLUTION-DYED POLYPROPYLENE



LIFETIME COMMERCIAL WARRANTIES

- PVC-free polyester backing with modified bitumen core
- Commercial wear, comprehensive stain and backing performance warranties
- Recommended adhesives: Bostik LOCK A499 PSA, DriTac 5900 MegaBond



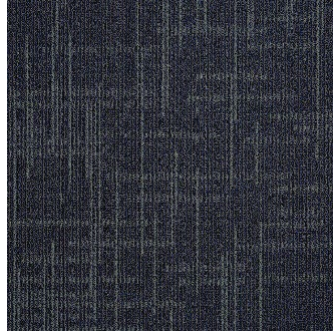
IN STOCK

Framework
CARPET TILE

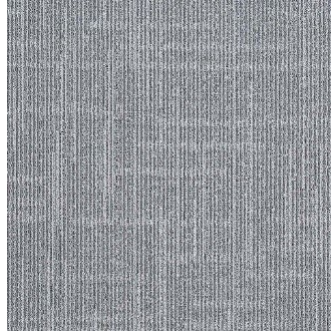
MATREXX
FLOOR

19.7" x 19.7"

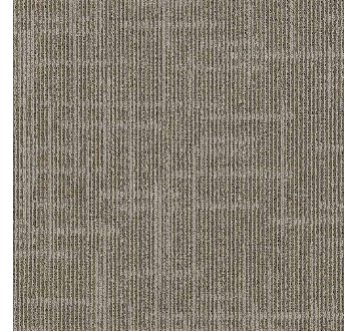
6 yd²/ctn 32 ctn/plt 192 yd²/plt



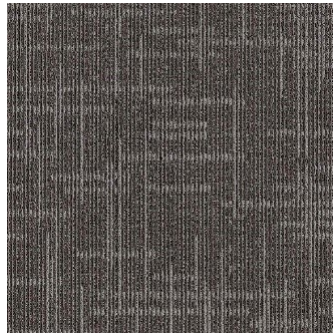
879002
Steel Blue



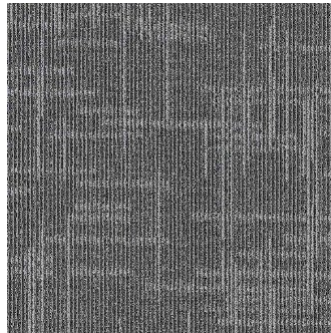
879008
Aluminium



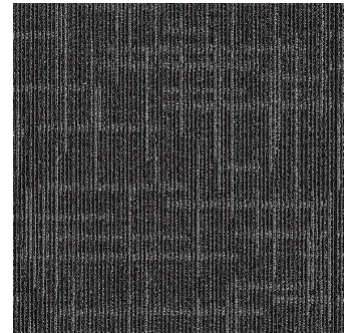
879011
Sand Dune



879012
Chestnut



879013
Battleship



879014
Graphite

Please order samples for exact product colors.

